

INNOVATIVE METHODOLOGY

We developed our CSR strategy in close collaboration with an independent scientific committee of leading experts

To define its new CSR strategy, Klépierre surrounded itself with experts, setting up a scientific committee of nine leading figures who worked closely with the Group for a full year to help draw up a realistic yet ambitious roadmap. The Group's employees were also asked to have their say.



MICHAEL SHUMAN
LOCAL ECONOMIES

Attorney, economist, professor (Bard Business School), consultant (Council Fire) and author (The Main Street Journal), specializing in the development of local economies



JEAN JOUZEL
CLIMATE CHANGE

Climatologist, researcher, former Vice-Chair of the IPCC and special advisor to the French government



ELISABETH LAVILLE
CSR & BRANDS

Founder and Chief Entrepreneur at Utopies



LUDOVIC POUTRAIN
HUMAN RESOURCES

Founder and Chief Executive Officer of Imago Accompagnement and former head of human resources at Nhood and Kiabi



NATHALIE DAMERY
CONSUMPTION

Co-founder of ObSoCo



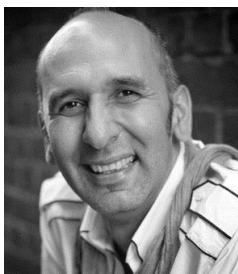
CEDRIC BOREL
ENERGY

Head of Action for Market Transformation (A4MT), Chair of Construction21 France and former head of the French Institute for Building Performance (IFPEB)



SONIA LAVADINHOL
URBAN PLANNING

Speaker, consultant, business coach and Founding Director of Bfluid prospective research



GILBERT ROCHECOUSTE
PLACEMAKING

Founder and Managing Director of Village Well



EVA HINKERS
CIRCULAR ECONOMY

Chair of the Europe region and member of the Management Board of Arup

